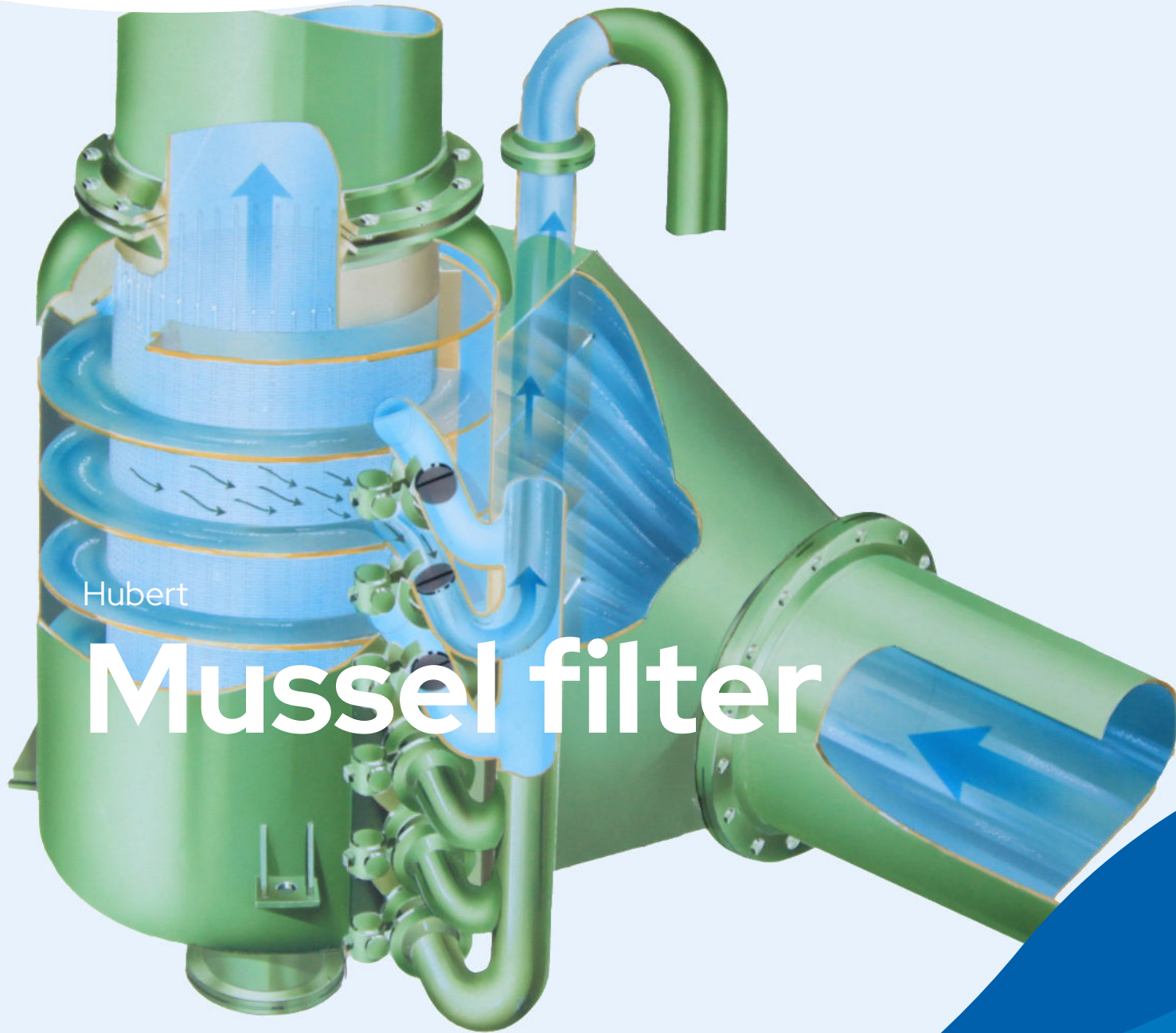




**Hubert**

Water Screening Solutions



Hubert

# Mussel filter

Hubert is part of

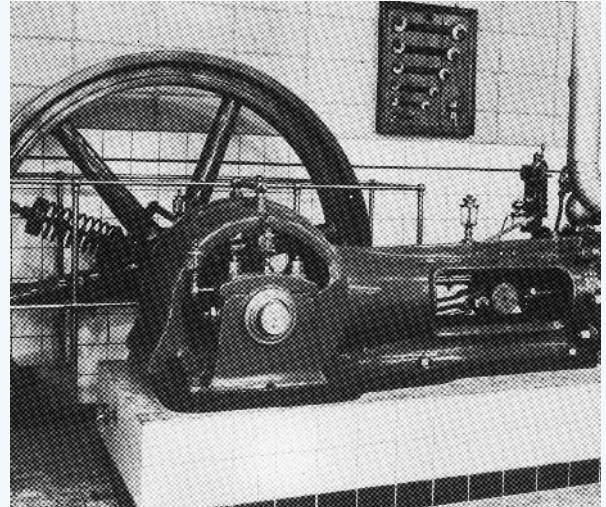


# Over 250 years of experience

## *2025 : a new name, familiar craftsmanship*

The journey of our collective “water power” began in 1880 with the foundation of Hubert, followed by the establishment of Landustrie in 1913. Since the early days of our shared history, Frisian craftspeople have been developing sustainable solutions in our water world. In 2011, the addition of Desah’s innovative capabilities further strengthened our commitment to reliable quality.

Now, we begin a new chapter together. Noarding combines the strength of three brands: Desah, Hubert, and Landustrie. This enables us to supply futureproof water technology solutions across the entire water cycle.



## Hubert mussel filter

### *Protects heat exchangers and condensers*

Our mussel filter provides reliable protection against *Dreissena polymorpha*, commonly known as the zebra mussel—an invasive species notorious for causing significant damage to vital water systems. In addition to filtering out mussels, it also removes other crustaceans and aquatic organisms.

With the global spread of zebra mussels increasing each year, they pose a growing threat to water intake systems. Our mussel filter is designed for use in water intake systems at power plants, refineries, and chemical facilities that rely on surface water for cooling. By preventing macrofouling, it safeguards downstream components such as heat exchangers, condensers, and pumps.

Additionally, our filter is effective in closed-loop heating water systems, where hot water is transported over long distances. These systems are prone to fouling, particularly at the start of the season or after maintenance work. By ensuring cleaner water, our filter helps maintain system efficiency and reliability.



# Design and construction

A Hubert mussel filter consists of a cylindrical carbon steel housing containing a round filter basket made of v-wire—a material known for its excellent filtration and release properties.

Water enters the system through a welded inlet and flows tangentially toward the filter medium. It then passes radially through the filter and exits axially from the basket.

The space between the filter basket and the housing is divided into 2 to 10 compartments, each equipped with a flushing connection and a shut-off valve.

The filter is controlled via a PLC, which can be integrated with communication ports for seamless connection to middleware systems.

A key advantage of this filter system is the absence of moving parts. Unlike other designs, it does not rely on flushing arms or non-return valves within the filter housing to clean the filter basket. This ensures a continuous and reliable supply of mussel-free and crustacean-free cooling water for the plant.

The mussel filter is a precisely engineered product, but we also offer a standard range of filters in various sizes and capacities to suit different client applications.

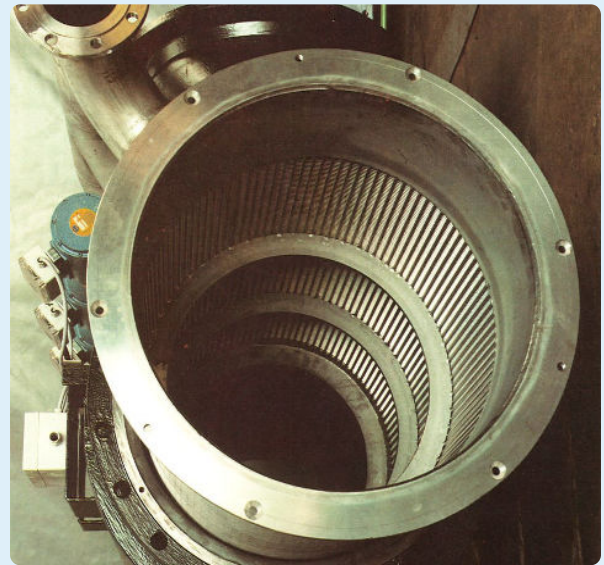
Our mussel filter design is suitable for existing piping systems, with both horizontal and vertical application options. It can be installed downstream in a (sea) water intake system, including coarse screens, fine screens, and stop logs.

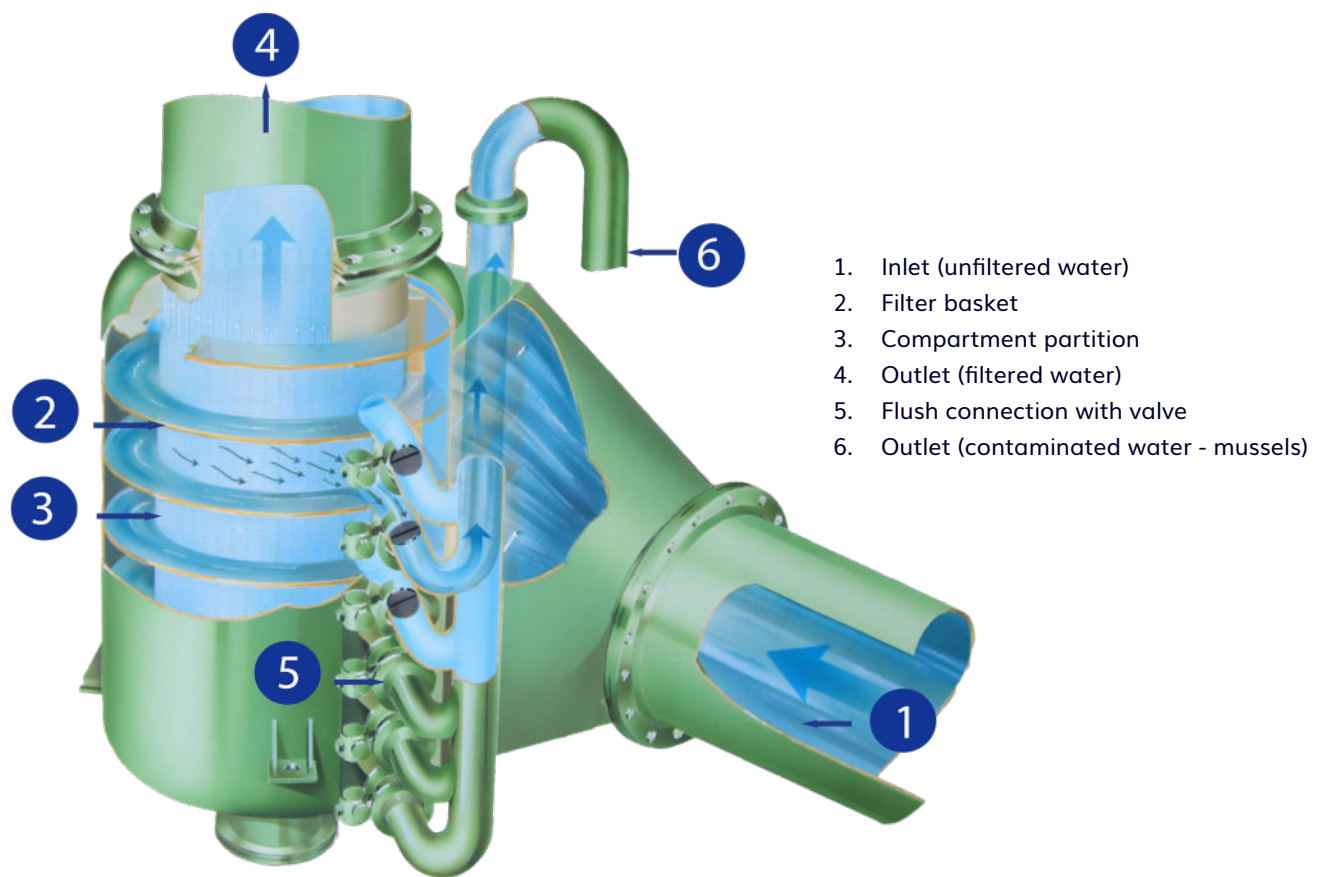
## Features and Benefits

- Fault-free process.
- Engineered yet versatile.
- Flexible installation.
- Seamless integration.

## Range

- 4 standard designs:  
NW 300 / 600 / 800 / 1000.
- vertical as well as horizontal configuration.
- capacity : 300 - 4500 m<sup>3</sup>/h (nominal).





## Filter Operation

The contaminated water (1) enters the filter tangentially and circulates around the filter basket (2) within each compartment (3). It then passes radially through the basket and is transported further in an axial direction (4). Crustaceans, such as mussels, remain trapped within the compartments.

The level of contamination is monitored through differential pressure measurement between the inlet (1) and the outlet (4). When the preset pressure difference is reached, the filter initiates a flushing sequence, cleaning one compartment at a time. Each compartment is equipped with its own flushing connection and globe valve (5).

When a flushing valve (5) is opened, the tangential flow rate around the filter basket increases. This creates a pressure drop within the compartment, causing water (4) to flow back from the basket into the compartment.

As a result, all accumulated contaminants are discharged through the flush valve to the outside (6).

The multi-compartment design minimizes pressure loss during flushing, ensuring that the overall system capacity remains largely unaffected, with only a slight reduction equivalent to the amount of flushing water used.

# After sales

The knowledge of the manufacturing process and the decades of experience of operating and maintaining makes us the clear choice to provide full after sales support. The after sales is not restraint to spare parts only, but includes all from repairs and problem solving, to maintenance, training and upgrades.

We even can optimise and refurbish your existing equipment.

For more information:

[AFTERSALES@NOARDLING.NL](mailto:AFTERSALES@NOARDLING.NL)



## Installation & commissioning

Our installation teams are known for high-quality, fast solutions in any conditions, with on-site tuning tailored to your site. Our equipment can be installed by our specialists or supervised by our experts, ensuring proper setup with a local team.

## Refurbishment

We restore the quality, performance, and reliability of our products, often resulting in a more cost- and energy-efficient setup. The process begins with an analysis of the current system. Based on this, we recommend either refurbishing existing parts or partial renewal. The result? An upgraded system, ready for years of service!

## Expertise

With extensive screen installation experience, our experts are here to enhance screen effectiveness by analyzing complete plant processes. If issues arise, our team will identify root causes and work with you to find and implement effective solutions.

## Maintenance

We offer both preventive and corrective maintenance, supported by a dedicated service team for scheduled routines and urgent repairs. Replacement parts are readily available for quick dispatch, ensuring maximum system uptime.





# Hubert

Water Screening Solutions

## Hubert is part of Noardling

PO Box 199, 8600 AD Sneek, The Netherlands

T. +31 (0)515 48 68 88

E. [info@noardling.com](mailto:info@noardling.com)

W. [www.noardling.com](http://www.noardling.com)

A. Pieter Zeemanstraat 6, Sneek

## Our Water Cycle

From water intake systems to water cooling, from water management to wastewater treatment, hydropower, pumping installations, and award-winning innovations in the field of decentralised wastewater treatment, discover the water cycle here by scanning the QR-code.



# Noardling

Futureproof Water Technology

The Noardling company is engaged in Futureproof Water Technology. With more than 250 years of experience in moving and treating of water.

## Noardling brands:



Desah

Decentralised Wastewater  
Solutions



Hubert

Water Screening  
Solutions



Landustrie

Water Treatment  
Solutions