

Hubert

Micro Screen

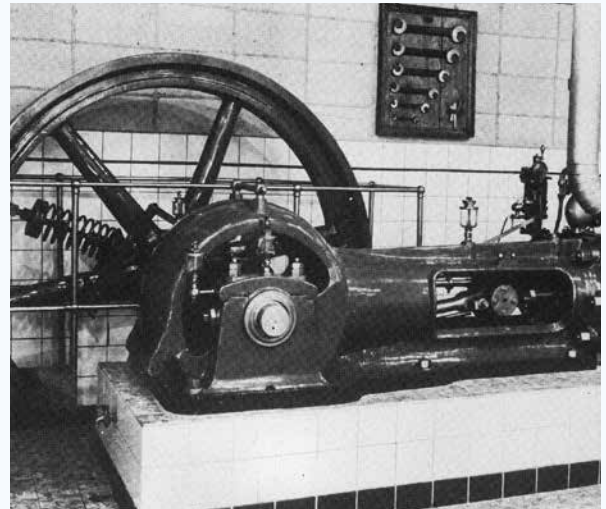


Over 250 years of experience

2025 : a new name, familiar craftsmanship

The journey of our collective “water power” began in 1880 with the foundation of Hubert, followed by the establishment of Landustrie in 1913. Since the early days of our shared history, Frisian craftspeople have been developing sustainable solutions in our water world. In 2011, the addition of Desah’s innovative capabilities further strengthened our commitment to reliable quality.

Now, we begin a new chapter together. Noarding combines the strength of three brands: Desah, Hubert, and Landustrie. This enables us to supply futureproof water technology solutions across the entire water cycle.



Hubert micro screen

A Hubert micro screen is applied in places where high demands are made on the purity of surface, process and re-circulated water.

Hubert micro screen or microstrainer can be found in freshwater intakes, acting as fine pre-filtration system of potable water for production plants, or production plants that consume a lot of processwater. This filter can also be applied for process water recirculation. The recovery of useful raw materials from process water, stricter discharge requirements, and recycling of process water makes the use of these engineered filters increasingly interesting.

Other applications are treatment of effluent in a wastewater treatment plant and pre-filtration in membrane filtration systems.



Design and construction

A Hubert micro screen is a rotating cylindrical construction, provided with a filter medium at the perimeter consisting of one or more layers of woven wire mesh. This filter is placed in a concrete container or steel tank and is usually applied under free fall conditions. Flow rates can be up to 5,000 cubic meters per hour per screen, depending on customer requirements and the application.

The woven wire mesh has a nominal filter rating (mesh opening or aperture) of 11 to 500 microns. The filtration fabric is supported by coarse mesh and sometimes reinforced with perforated plates. The efficiency and capacity of a micro screen strainer depend on several factors, including the characteristics of the fine filtration fabric, the rotation speed of the micro screen, the composition and quality of the water to be purified, and the amount of backwashing water.

It is important to mention that there is no standard method known to determine the nominal filter rating of a woven wire mesh. Depending on the filter fineness, different types of weaving patterns are possible. Therefore, the standard data often stated should be used with care. As a result, this type of filter is almost always first tested in a pilot setup in the field, often with different media.

Also, the composition of the water (including changes due to factors such as seasonal influences and location) has a major influence on the filter results. In consultation with the customer, it is determined which filter mesh will achieve the best result.

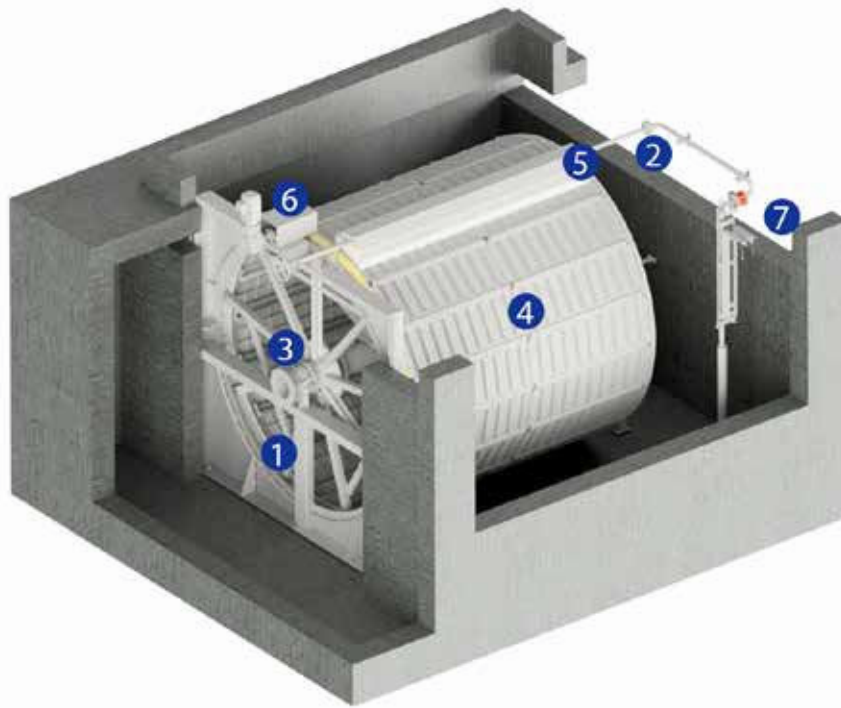
Features and Benefits

- Light, stable, and robust construction
- Reliable
- Maintenance free
- Long lifetime (30 years or more)
- Resistant to abrasive water

Standard Dimensions and Materials

- Drum length: up to 6 m
- Drum diameter: from 0,7 up to 3,5 m
- Mesh opening from: 11 to 500 micron





1. Inlet (unfiltered water)
2. Outlet / overflow weir (filtered water)
3. Debris discharge through central shaft
4. Drum screen and filter panels
5. Spray water system
6. Drive and toothed gear
7. Concrete pit or tan

Filter Operation

The Hubert micro screen system consist of a drum screen fitted along its outer circumference with filter screen panels (4). The drum is placed in a concrete pit or tank (7) and rotates on a stationary hollow shaft (3) fitted with one or more funnel-shaped debris collectors. The feedstock of water enters the drum axially (1) and flows radially through the mesh panels. The dirt particles remain trapped in the mesh. As the drum rotates, the row of screen panels pass under a set of high-pressure water jets at the top of the drum (5). The dirt particles are washed from the screen and discharged through the debris collectors and the hollow shaft (3). The debris is transported to a container.

If the microscreen is positioned lower than the container, a screw pump or other conveyor belt can be placed to transport the debris to the container. The drum rotates using a reliable drive with toothed gears (6). The 'clean' side of the screen compartment is fitted with an overflow weir (2) which enables

the water inside the screening chamber to be kept at a constant level. This ensures that the largest possible screening area is constantly submerged, resulting in a high yield of solids. The contamination of the filters is low due to the use of filtered water in the spray water system and ultrasound. The special seal also prevents contamination of the bearing and ensures effective sealing of the micro screen.

Fish Friendly – Fish Recovery System

All our micro screens can be provided with a fish recovery system that allows trapped fish to be removed in a gentle and effective way. These recovery systems are tailor-made for each project.

References

- Drinking water companies (Dunea, Anglian Water, Concorde Trading)
- Industry (Dolfinarium, cocoa factory, potato industry, paper mill)
- Sewage treatment plant (Redstack, RWZI Limmel, RWZI Houtrust, Hollandia)
- Sewage polishing (Ras Lanuf, Prometall)
- Desalination plant (GEBE St. Maarten)

We have several pilots in the field in addition to the already built installations. This is to gain new insights, to continuously improve the performance of the product, and to offer you the best solution.

After sales

The knowledge of the manufacturing process and the decades of experience of operating and maintaining makes us the clear choice to provide full after sales support. The after sales is not restraint to spare parts only, but includes all from repairs and problem solving, to maintenance, training and upgrades.

We even can optimise and refurbish your existing equipment.

For more information:

AFTERSALES@NOARDLING.NL



Installation & commissioning

Our installation teams are known for high-quality, fast solutions in any conditions, with on-site tuning tailored to your site. The micro drum screen can be installed by our specialists or supervised by our experts, ensuring proper setup with a local team.

Refurbishment

We restore the quality, performance, and reliability of any screen, often resulting in a more cost- and energy-efficient setup. The process begins with an analysis of the current system. Based on this, we recommend either refurbishing existing parts or partial renewal. The result? An upgraded screen, ready for years of service!

Expertise

With extensive screen installation experience, our experts are here to enhance screen effectiveness by analyzing complete plant processes. If issues arise, our team will identify root causes and work with you to find and implement effective solutions.

Maintenance

We offer both preventive and corrective maintenance, supported by a dedicated service team for scheduled routines and urgent repairs. Replacement parts are readily available for quick dispatch, ensuring maximum system uptime.





Hubert

Water Screening Solutions

Hubert is part of Noardling

PO Box 199, 8600 AD Sneek, The Netherlands

T. +31 (0)515 48 68 88

E. info@noardling.com

W. www.noardling.com

A. Pieter Zeemanstraat 6, Sneek

Our Water Cycle

From water intake systems to water cooling, from water management to wastewater treatment, hydropower, pumping installations, and award-winning innovations in the field of decentralised wastewater treatment, discover the water cycle here by scanning the QR-code.



Noardling

Futureproof Water Technology

The Noardling company is engaged in Futureproof Water Technology. With more than 250 years of experience in moving and treating of water.

Noardling brands:



Desah

Decentralised Wastewater
Solutions



Hubert

Water Screening
Solutions



Landustrie

Water Treatment
Solutions