

Hubert

# Travelling Band Screen

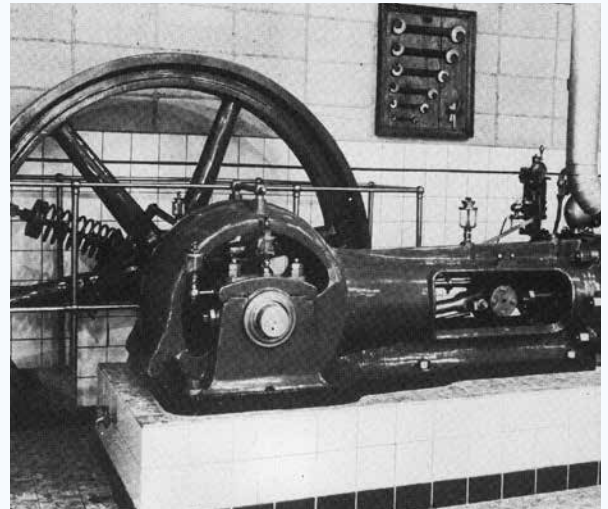


# Over 250 years of experience

## 2024 : a new chapter begins

The journey of our collective “water power” began in 1880 with the foundation of Hubert, followed by the establishment of Landustrie in 1913. Since the early days of our shared history, Frisian craftspeople have been developing sustainable solutions in our water world. In 2011, the addition of Desah's innovative capabilities further strengthened our commitment to reliable quality.

As of 2024, we have begun a new chapter together. Noarding now combines the strength of three brands: Desah, Hubert, and Landustrie. This enables us to supply futureproof water technology solutions across the entire water cycle.

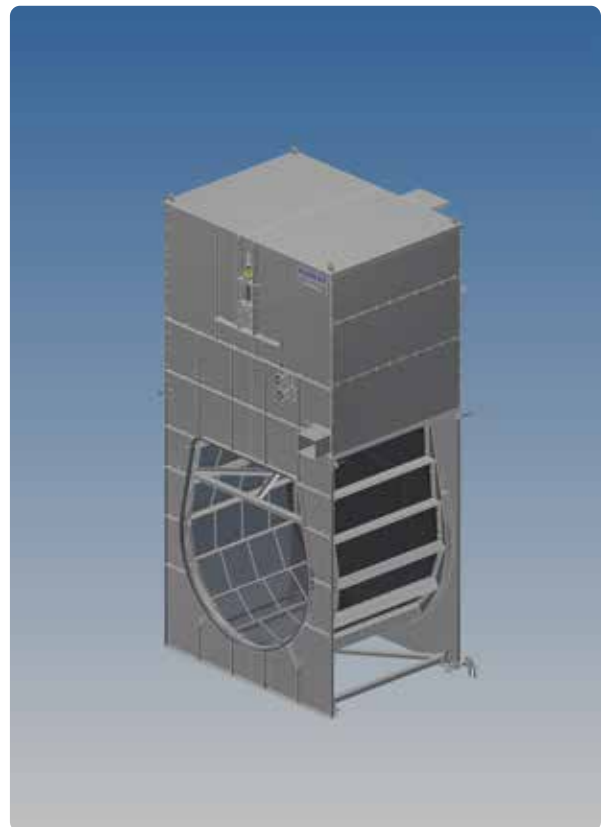


## Hubert Travelling Band Screen

A Hubert travelling band screen is the 'heart' of the 'screening train', often used for (sea)water intakes as part of power plants and desalination plants, where big tidal differences can also play a role.

It is more compact than a (vertical) drum screen, but it has still a high capacity. Quite common flow rates are 15.000 m<sup>3</sup>/h per screen, depending on customer requirements and the local situation at the intake.

A travelling band screen is typically installed in water intake systems downstream from coarse bar screens. Woven mesh with a diameter of approx. 2 - 10 mm is used as relative fine filter medium.





## Design and construction

Travelling band screens require only a small installation area due to the vertical construction. This type of screen is used in places where the construction area of the total cleaning installation is limited or where big differences occur between water levels.

The band water screen operates on a conveyor belt principle. The 'conveyor belt' is composed of mesh panels that are mounted between two endless heavy-duty transport chains. The chains are driven by two sprockets.

The debris trapped on the screens is removed by spray water jets and discharged through a flushed chute. The drive unit, flushing mechanism and debris hopper are located at deck level. The upper section above deck level is fitted with a metal or reinforced polyester composite cover.



## Features and Benefits

- Large flow capacity
- No debris carry-over
- High screening efficiency (99%)
- Minimal construction space required
- Big differences between water levels
- High quality and reliable
- Long lifetime (30 years or more)
- Resistant to abrasive water
- (Sea)water lubricated bearing

## Standard dimensions and materials

- Width: up to 4 m
- Pit depth: up to 20 m
- Skid or embedded configuration
- Mesh: opening 2/ 10 mm
- Installation angle: 70/90°
- Materials: (coated) carbon steel, stainless steel, (super) Duplex

## Fish friendly - fish recovery system

The Hubert travelling band screens can be supplied with a fish recovery gutter or channel that allows trapped fish to be removed in a gentle and effective way. These recovery systems are tailormade for each project.

# Preparation & design

Already from the first design, our engineers can guide you. Assisting with the design, layout, materials, all can be done with the cooperation of the experienced engineers.

As no two sites or projects are alike, early engagement with our engineers, will in the end lead to a top class travelling band screen.

# Installation & commissioning

Our teams are renowned for the quality of work in the field. Under any condition, the installation teams are able to deliver high quality and fast solutions. On-site tuning to your specific site characteristics is one of the skills of the team.

The travelling band screen can always be installed by our specialised installation teams. Another option is the use of our supervisors, who will ensure proper installation, together with a local team.



# Refurbishment

We can restore the quality, performance and reliability of any screen, including those delivered by other manufacturers. This could also lead to a more cost and energy efficient installation than what was originally supplied.

The refurbishment route always starts with an analysis of the current system demands and status of the installation. Then either renovation of the current screen and parts will be advised or (a partially) renewal. The end result will be the same, an upgraded screen and ready to serve you for the years to come!

# After sales

The knowledge of the manufacturing process and the decades of experience of operating and maintaining makes us the clear choice to provide full after sales support. The after sales is not restraint to spare parts only, but includes all from repairs and problem solving, to maintenance, training and upgrades.

We even can optimise and refurbish your existing equipment.

For more information:

[AFTERSALES@NOARDLING.NL](mailto:AFTERSALES@NOARDLING.NL)



## Expertise

Using the experience of installing numerous screens, our team of experts is available for your service. Our staff understand and are able to analyse the complete plant processes in order to increase the effectiveness of any screen.

In case of any problems one of our experts can observe, analyse and find the root cause of the problem.

Together with you as a client, the team of experts will work towards finding the solution and solving the issue.

## Maintenance

Both preventive and if required, corrective maintenance for the installation, can be provided by us. With a special service department, maintenance routines can be scheduled together, likewise urgent repairs can be handled by us straight away, when and wherever they may occur.

Furthermore, replacement parts are easily available and can be quickly dispatched to your site for quick maintenance, ensuring the all important system up-time is achieved.





### Hubert is part of Noardling

PO Box 199, 8600 AD Sneek, The Netherlands  
T. +31 (0)515 48 68 88  
E. [info@noardling.com](mailto:info@noardling.com)  
W. [www.noardling.com](http://www.noardling.com)  
A. Pieter Zeemanstraat 6, Sneek

---

### Our Water Cycle

From water intake systems to water cooling, from water management to wastewater treatment, hydropower, pumping installations, and award-winning innovations in the field of decentralised wastewater treatment, discover the water cycle here by scanning the QR-code.



The Noardling company is engaged in Futureproof Water Technology. With more than 250 years of experience in moving and treating of water.

### Noardling brands:



Decentralised Wastewater Solutions



Water Screening Solutions



Water Treatment Solutions