

Hubert

# Drum Screen

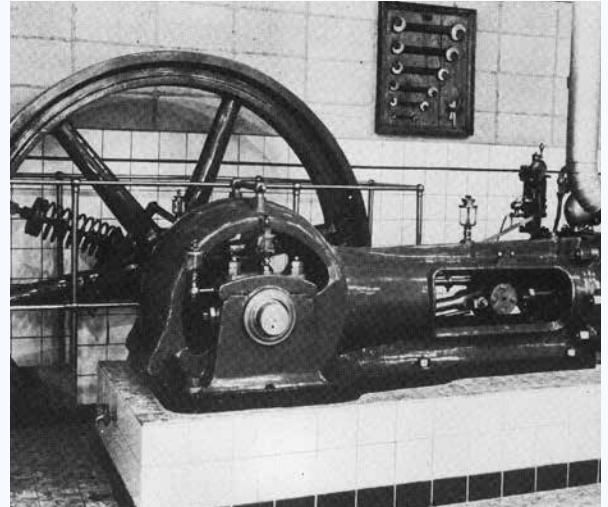


# Over 250 years of experience

## 2024 : a new chapter begins

The journey of our collective “water power” began in 1880 with the foundation of Hubert, followed by the establishment of Landustrie in 1913. Since the early days of our shared history, Frisian craftspeople have been developing sustainable solutions in our water world. In 2011, the addition of Desah's innovative capabilities further strengthened our commitment to reliable quality.

As of 2024, we have begun a new chapter together. Noarding now combines the strength of three brands: Desah, Hubert, and Landustrie. This enables us to supply futureproof water technology solutions across the entire water cycle.



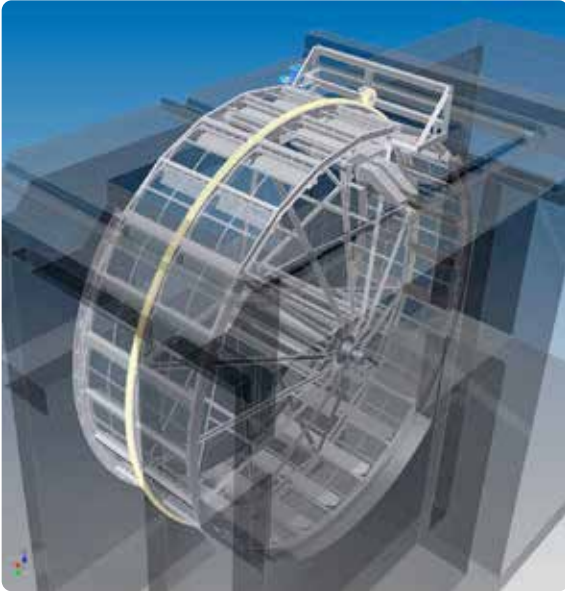
## Hubert drum screen the heart of the screening train

Our (vertical) rotary drum screens are mainly used for (sea) water intakes as part of power plants and desalination plants, where tidal differences can also play a role.

A drum screen is typically installed in water intake systems downstream from coarse bar screens. Regularly occurring flow rates are between 40.000 and 120.000 m<sup>3</sup>/h per screen, depending on customer requirements and the local situation at the intake.

A drum screen is used for relative fine filtration; the filter medium is a woven mesh with a wire diameter of about 2-3 mm.





## Design and construction

The drum is placed in a concrete pit or tank and rotates on a stationary hollow shaft. The water to be filtered flows through the drum panels and the dirt particles remain trapped in the mesh. Hubert vertical drum screens are available for different flow patterns.

As the drum rotates the row of screen panels pass under or above a set of high pressure water jets at the top of the drum. The dirt particles are washed from the screen and discharged through a debris collector system.

The Hubert vertical (rotary) drum screens are designed with A-shaped spokes, resulting in high rigidity and resistance to deformation. This produces an accurate fit against pit walls, enabling filtration of particles down to 2 mm. All Hubert drum screens are fitted with maintenance free slide (sea)water lubricated bearings. The same applies to the ring gear.

## Fish Friendly – Fish Recovery System

A Hubert drum screens can be supplied with a fish recovery gutter or channel that allows trapped fish to be removed in a gentle and effective way. These recovery systems are tailor-made for each project.

## Features and Benefits

- Large flow capacities
- Light stable and rigid structure (due to our A-spoke construction)
- Reliable & Maintenance free
- Long lifetime (30 years or more)
- Resistant to abrasive water
- No need for a debris pump
- (debris removed at / or above deck lev.)
- Savings on spare parts
- (Sea)water lubricated bearing
- Spray water cleaning
- Fish removal

## Standard Dimensions and Materials

- Drum width: up to 5 m, drum diameter up to 20 m
- Mesh opening: 2/ 10 mm
- Materials: (coated) carbon steel, stainless steel, super) Duplex

# Preparation & design

Already from the first design, our engineers can guide you. Assisting with the design, layout, materials, all can be done with the cooperation of the experienced engineers.

As no two sites or projects are alike, early engagement with our engineers, will in the end lead to a top class travelling band screen.

# Installation & commissioning

Our teams are renowned for the quality of work in the field. Under any condition, the installation teams are able to deliver high quality and fast solutions. On-site tuning to your specific site characteristics is one of the skills of the team.

The Hubert drum screen can always be installed by our specialised installation teams. Another option is the use of our supervisors, who will ensure proper installation, together with a local team.



# Refurbishment

We can restore the quality, performance and reliability of any screen, including those delivered by other manufacturers. This could also lead to a more cost and energy efficient installation than what was originally supplied.

The refurbishment route always starts with an analysis of the current system demands and status of the installation. Then either renovation of the current screen and parts will be advised or (a partially) renewal. The end result will be the same, an upgraded screen and ready to serve you for the years to come!

# After sales

The knowledge of the manufacturing process and the decades of experience of operating and maintaining makes us the clear choice to provide full after sales support. The after sales is not restraint to spare parts only, but includes all from repairs and problem solving, to maintenance, training and upgrades.

We even can optimise and refurbish your existing equipment.

For more information:

[AFTERSALES@NOARDLING.NL](mailto:AFTERSALES@NOARDLING.NL)



## Expertise

Using the experience of installing numerous screens, our team of experts is available for your service. Our staff understand and are able to analyse the complete plant processes in order to increase the effectiveness of any screen.

In case of any problems one of our experts can observe, analyse and find the root cause of the problem.

Together with you as a client, the team of experts will work towards finding the solution and solving the issue.

## Maintenance

Both preventive and if required, corrective maintenance for the installation, can be provided by us. With a special service department, maintenance routines can be scheduled together, likewise urgent repairs can be handled by us straight away, when and wherever they may occur.

Furthermore, replacement parts are easily available and can be quickly dispatched to your site for quick maintenance, ensuring the all important system up-time is achieved.





### Hubert is part of Noardling

PO Box 199, 8600 AD Sneek, The Netherlands  
T. +31 (0)515 48 68 88  
E. [info@noardling.com](mailto:info@noardling.com)  
W. [www.noardling.com](http://www.noardling.com)  
A. Pieter Zeemanstraat 6, Sneek

---

### Our Water Cycle

From water intake systems to water cooling, from water management to wastewater treatment, hydropower, pumping installations, and award-winning innovations in the field of decentralised wastewater treatment, discover the water cycle here by scanning the QR-code.



The Noardling company is engaged in Futureproof Water Technology. With more than 250 years of experience in moving and treating of water.

---

### Noardling brands:



Decentralised Wastewater Solutions



Water Screening Solutions



Water Treatment Solutions