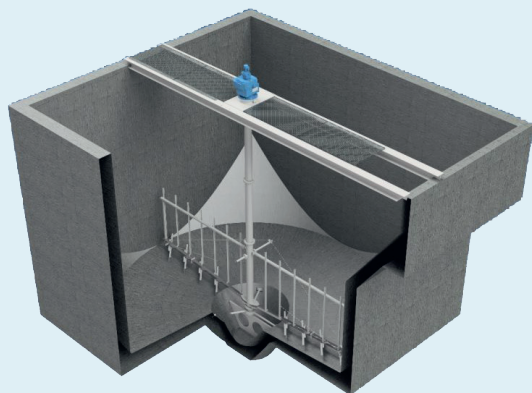


Hubert

# Thickener



Hubert supplies a complete range of gravity thickener machinery for (gravity) thickening and removal of primary, secondary and stabilised sludge.



## Central Drive Thickener

This thickener features a special drive unit fitted to the shaft or cage which can be equipped with an overload sensor. The scraper arms, which are fitted with rake blades are connected to the drive unit by means of a shaft or cage.

## Scum Removal

- Feedwell (inlet drum)
- Obstacle and/or slip protection
- Weirs and baffles, deflection plate

## Thickener

### Hubert supplies gravity thickeners for every application

Thickening is usually the first step in a water (sludge) treatment plant because it is impractical to handle thin sludge, a slurry of solids suspended in water. A thickener can reduce the total volume of sludge to less than half the original volume.

Hubert thickeners are suitable for a circular tanks and are fitted with a rotating thickening and removal system.

A Hubert thickener can be provided with 2 types of drive units. The system can be supplied with either a peripheral drive system or a central drive unit. Our thickeners are adapted to your project specification, based on standard Hubert components.

## Peripheral Drive Thickener

Our peripheral drive thickener can be configured as follows:

*Half bridge:* the peripheral side is fitted with a two- wheeled carrier.

*Full bridge:* the bridge is fitted with a two wheeled carrier at either end.



# History

Hubert, founded in 1880, has almost 150 years of experience in design and engineering, in-house manufacturing, installation and service of equipment for water purification and water intake applications. Our engineered products and technical expertise have enabled Hubert to become a major player in the global market for water treatment solutions. We focus on high-quality equipment with a long service life.

Over the years, we have gained an extensive number of satisfied customers and project references all over the world. Our machinery is a crucial part of every production facility and is usually continuous in operation. Our equipment has to operate efficiently and reliably in extreme weather conditions. Hubert's installed base comprises many thousands of installations that have recently been commissioned or that have been in operation for many years.

## OUR DIVISIONS

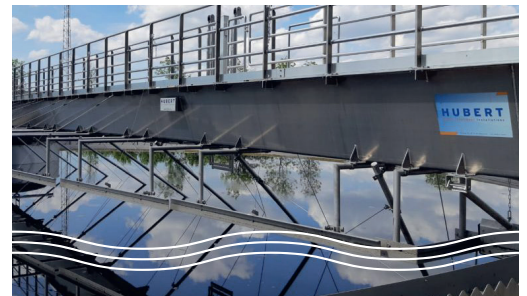
### Water Intake Systems

Hubert is market leader in water intake screening systems, used for mechanically clean water extracted from the sea, rivers or lakes. These systems can be found in power stations, petrochemical plants & refineries, desalination plants, drinking water & irrigation plants and industrial production plants requiring a huge demand for process water. We supply complete 'screening trains', including all additional equipment like controls and cathodic protection. We design, engineer, and manufacture our equipment in-house. You will find our projects in both new construction (EPC) projects and renovation and optimization of existing water intakes.



### Wastewater Treatment Machinery

Hubert wastewater treatment machinery and (sub) installations are applied in municipal and industrial wastewater treatment plants. Our installations are of high quality and offer a long service life. Clients range from water boards and authorities in the public sector to multinationals in many industries.



### Service and After Sales

Keeping your machinery operational, this is the daily work of our Service and After Sales division, which proves its importance by keeping Hubert installations operational anywhere in the world. Founded in 1880, the large amount of projects that Hubert has carried out over the years has resulted in a huge installed base of equipment. Many of these are still in operation! We supply parts but also provide optimization and renovation of your existing equipment.



### High-Spec Steel Assemblies

We have been supplying both components and assembled parts to the offshore industry and other applications within the shipping and dredging industry for many years. Complex machined welding constructions, (sub) assemblies and complete products are part of our program. For this market we work according to customer (mechanical) specifications. Our scope includes parts in single pieces, series as well as assembled products.



# Over 250 years of experience in water handling and treatment

From water intake systems to water cooling, from water management to wastewater treatment, pumping stations, hydropower and prize-winning innovations in the field of decentralised wastewater treatment. DeSaH, Hubert and Landustrie have joined forces. From Sneek in Friesland, our experts develop and manufacture future-proof solutions with an above-average lifespan.

Pieter Zeemanstraat 6  
PO Box 199, 8600 AD Sneek, The Netherlands  
Tel. +31 (0)515 486 888 | [info@hubert.nl](mailto:info@hubert.nl)  
**hubert.nl**



**HUBERT**  
water treatment installations

**Landustrie** 