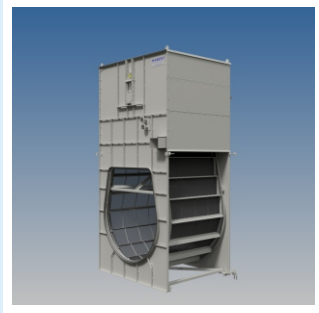


HUBERT

water treatment installations

BAPCO / JGC Gulf International Seawater Intake Filtration System (SIFS)

Project
Information



Project Introduction

Hubert was awarded the contract from JGC Gulf International Co. Ltd. for the Bahrain Petroleum Company (BAPCO) to improve the seawater filtration system at their HLPH facility. The Sea Water Intake Filtration system had to be delivered including all complementary equipment, items and services to meet the design and environmental conditions. Hubert was responsible for ensuring that the specification was met for all deliveries and services in subcontracting.

Hubert Supply

The seawater intake filtration system is designed to remove completely sea grass / weed, debris, plastic bags, wood chip, mollusk, jelly fish etc. The system consist of sluice gates positioned upstream and downstream of a Hubert Bar Screen and Travelling Band Screen. Motorized Hubert Sluice Gates are used for drying the channel of each intake 'train' to give access for maintenance of both bar screens & travelling band screen.

Hubert Bar Screens were used to keep out large parts. Our screens are designed to prevent vibrations during all operating conditions. They are therefore rigidly mounted on supporting profiles. Bar screens will be periodic cleaned by an automatic raking system, placed on a monorail construction just downstream of the inlet sluice gates. Two (1 working / 1 stand-by) trash raking systems are included for a full screening function.

The installation is provided with Hubert Travelling Band Screens based on a dual flow design. This will mean that water will flow from the outside of the screen through the mesh panels to the inside of the screen and then out through an opening in the back civil work wall of the screen chamber. The debris, which is collected on the outside of the mesh will be lifted above deck level, where it will be removed by high pressure water spray and then disposed.

Key Figures

Location	Bahrain
Hubert Products	Sluice Gates, Coarse / Bar Screens & Automated Raking System, Travelling Band Screens
Materials	Duplex, (coated) steel & s.s.316L.
Year	2018-2019



Company Profile

Hubert, founded in 1880, has almost 150 years experience in design & engineering, in-house manufacturing, installation & service of equipment for water purification and water intake applications. Our engineered products and technical expertise have enabled Hubert to become a major player on the global markets for water treatment solutions. We focus on high quality equipment with a long service life.

Over the years we gained an extensive number of satisfied customers & project references all over the world. Our machinery is a crucial part of every production facility and usually continuous in operation. Our equipment has to operate efficiently and reliably in extreme (weather) conditions. Hubert's installed base comprise many thousands of installations that have recently commissioned or that have been in operation for many years.

Below you can find more information about our divisional structure. We will be happy to hear about your project!

Our Divisions

Water Intake Systems

Hubert is market leader in water intake screening systems, used for mechanically clean water extracted from the sea, rivers or lakes. These systems can be found in power stations, petrochemical plants & refineries, desalination plants, drinking water & irrigation plants and industrial production plants requiring a huge demand of process water.

We supply complete complete 'screening trains' including all additional equipment, like controls and cathodic protection. We design, engineering and manufacture our equipment in-house.

You will find our projects in both new construction (EPC) projects and renovation & optimization of existing water intakes.

Waste Water Treatment Machinery

Hubert supplies waste water treatment machinery & (sub)installations applied in municipal and industrial waste water treatment plants. Our installations are of high quality and offer a long service life.

Clients range from water boards and authorities in the public sector, to multinationals in many industries.

Service & After Sales

Keeping your machinery operational. This is the daily work of our Service & After Sales division which proves its importance by keeping Hubert installations operational anywhere in the world. Founded in 1880, the large amount of projects that Hubert has carried out over the years has resulted in a huge installed base of equipment. Many of these are still in operation! We supply parts but also provide optimization and renovation of your existing equipment.

High-Spec Steel Assemblies

Hubert has been supplying both components and assembled parts to the offshore industry and other applications within the shipping and dredging industry for many years. Complex machined welding constructions, (sub) assemblies and complete products are part of our program.

For this market we work according to customer (mechanical) specs. Our scope includes parts in single pieces, series as well as assembled products.

